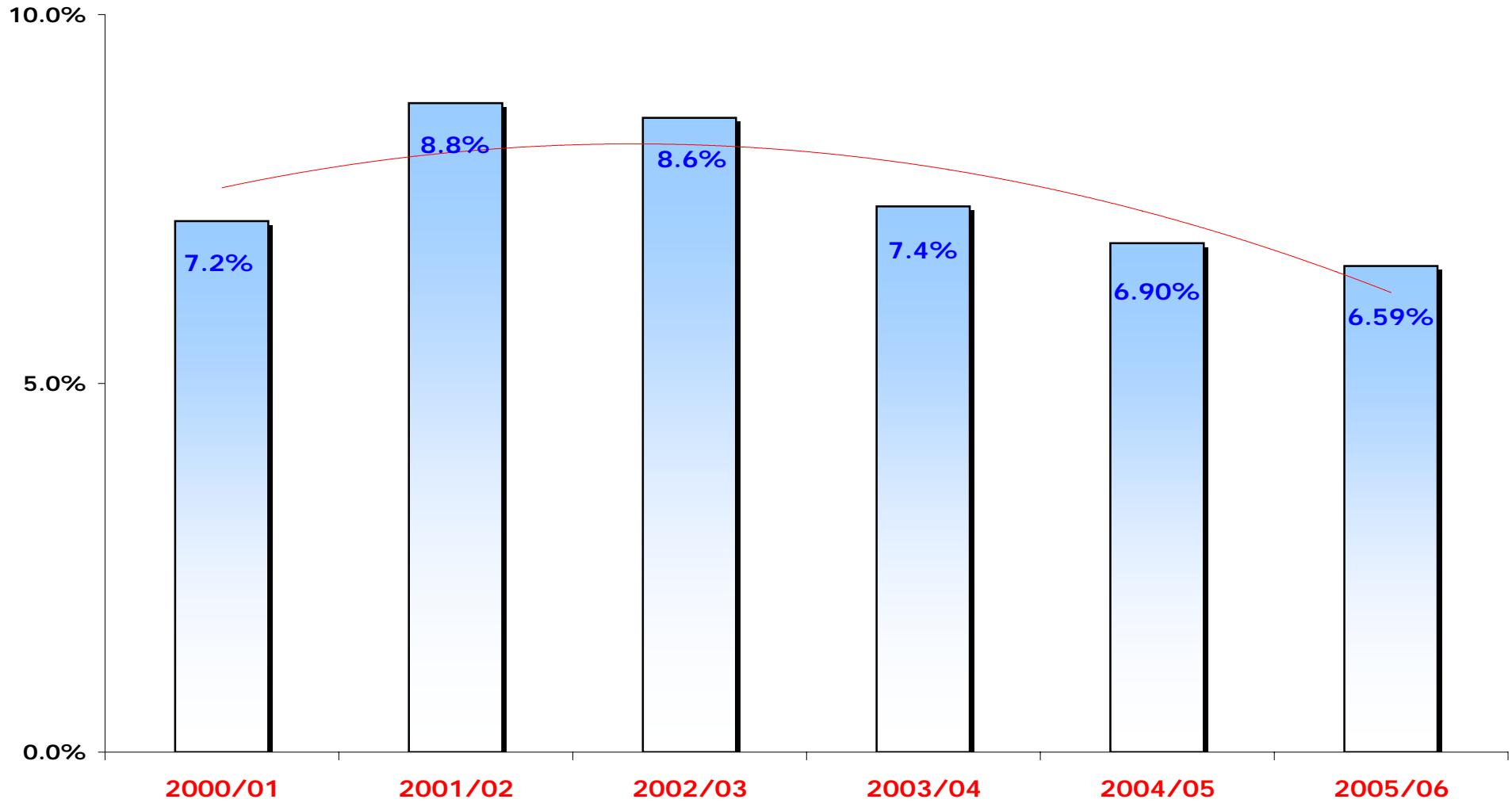
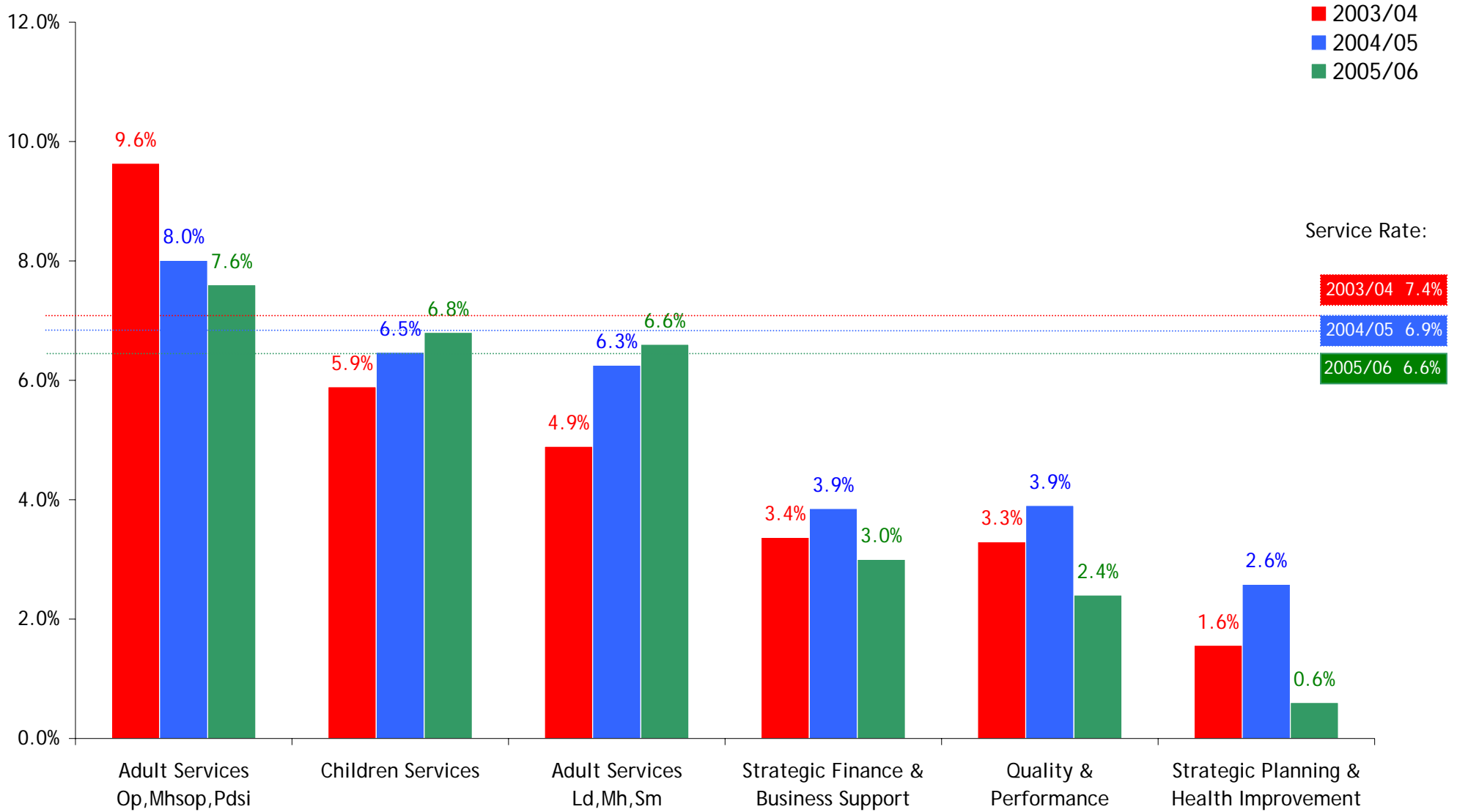


Social Care & Health Service Annual Sickiness Absence Rates

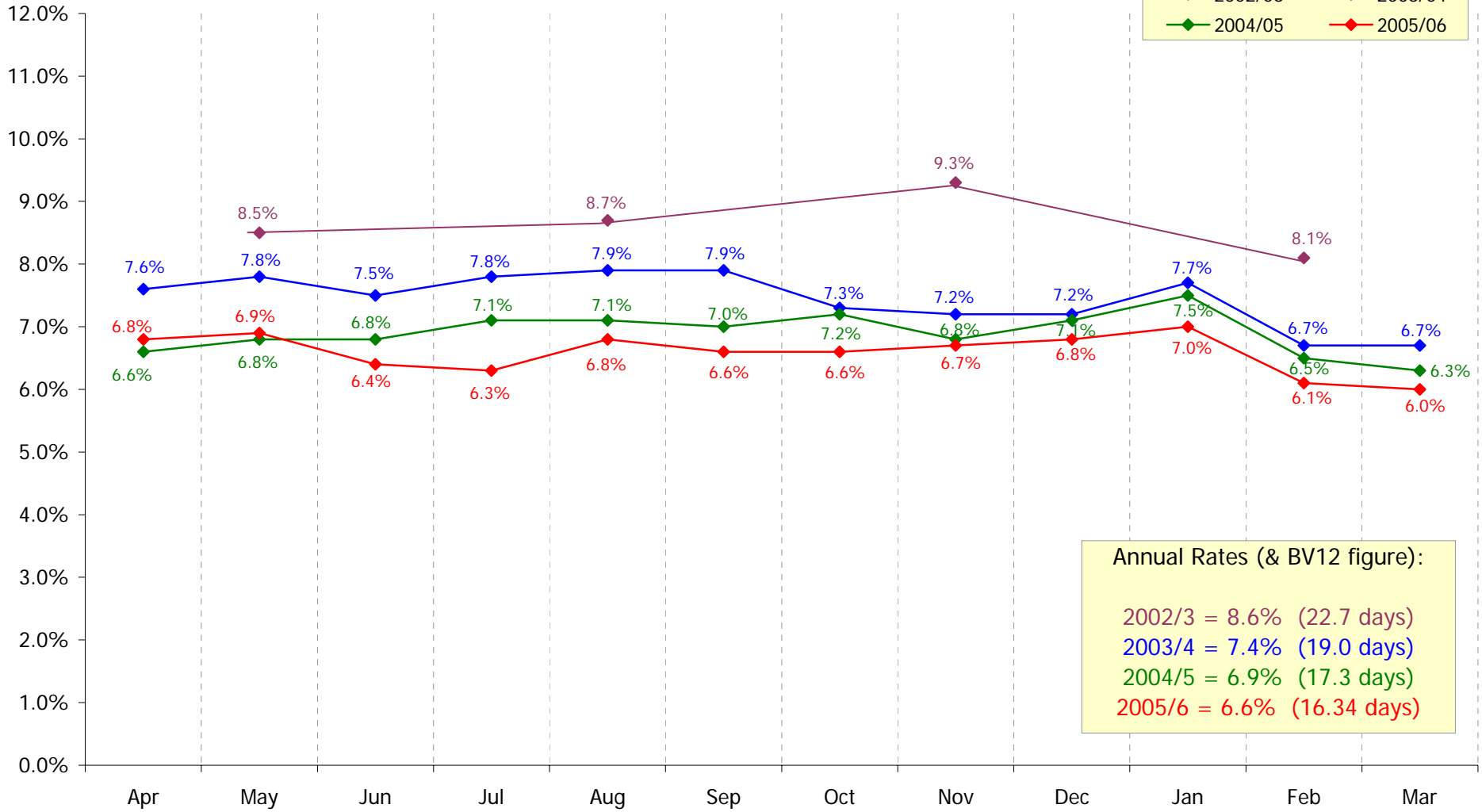
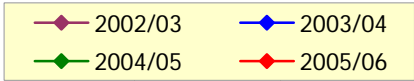


Branch Annual Rates



DCC SC&H Sickness Absence Rates

Key:



Annual Rates (& BV12 figure):

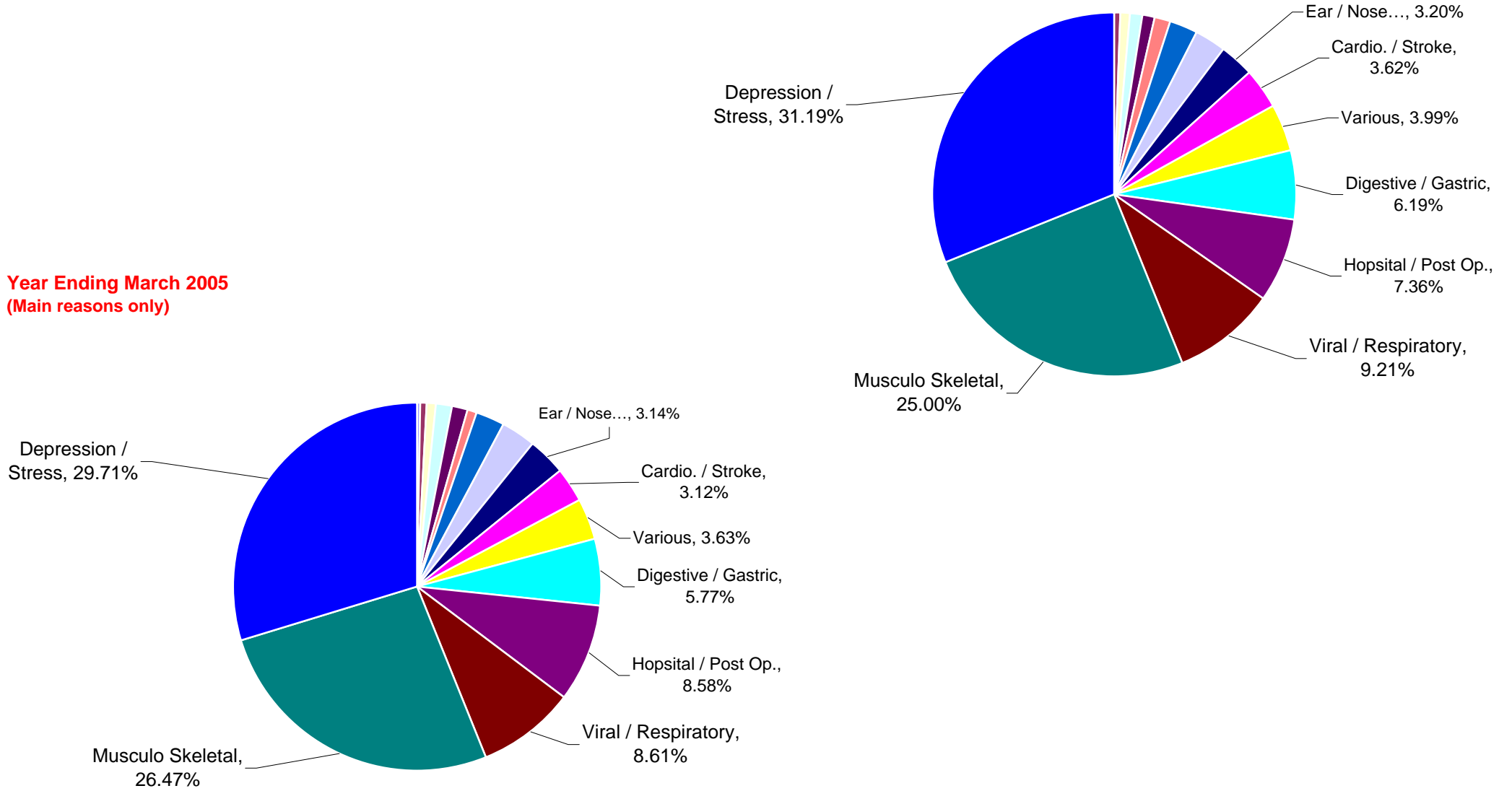
- 2002/3 = 8.6% (22.7 days)
- 2003/4 = 7.4% (19.0 days)
- 2004/5 = 6.9% (17.3 days)
- 2005/6 = 6.6% (16.34 days)

SC&H - Percentage of sickness absence days lost by reason type

Year Ending March 2006
(Main reasons only)

Year Ending March 2005 & 2006

Year Ending March 2005
(Main reasons only)



SC&H Long Term Absences (9 months or more) - Position Summary

	9 months sick leave as at:-					
Current Position	Dec-04	Mar-05	Jun-05	Sep-05	Dec-05	Mar-06
Capability Hearing Planned	5	5	3	8	5	6
Final Stage Interview planned	13	5	9	7	11	5
Other	5	7	4	4	1	4
Capability Hearing Notice	11	10	11	5	11	2
Further Subsequent Interview planned	0	0	0	0	1	0
Ill Health Retirement Notice	6	4	0	0	1	0
Imminent RTW following FSI / CH	2	2	1	2	0	0
TOTALS	42	33	28	26	30	17

SC&H Capability / Ill Health Retirement Leavers Summary

